

Monthly Newsletter of the *Kern County Mineral Society (KCMS)*

President's Message

James May – KCMS President 2022



Spring is beginning to fade away into the hot days of summer that we expect in the San Joaquin Valley. Although the temperatures are heating up, we have plenty of activities to keep our momentum going strong while projecting forward towards the Kern County Fair in late September. We have the workshop up and running, lapidary workshops planned, two field trips scheduled for the Coast in the summer, and our world-famous June Auction.

Steve and Connie were kind enough to host the grand opening of the KCMS Rock and Lapidary Shop on Saturday, April 30th. We had a ribbon cutting ceremony, delicious food items, and an opportunity to make some wonderful lapidary creations. If you missed the grand opening, no worries, we will have the workshop open the last Saturday of each month for the foreseeable future. There is plenty of equipment that can be utilized to create your lapidary masterpieces. You just need to bring a rock or slab to initiate the process.

The Club had a fantastic field excursion out to Lavic Siding in late April. We spent three days collecting various rocks and camped out at Pisgah Crater. The stars were out each evening, a few meteor showers, and the weather was perfect during the day for collecting. If you missed out, no worries, we have another field trip scheduled for San Simeon for June 8th through June 10th. The San Simeon campground is another great location to spend the night and Bernie has us scheduled to collect in the San Simeon Creek and we also have the hope of finding moonstone on the beaches of San Simeon. If you would like to attend, please notify Bernie by June 1st so he can arrange carpools and what food items need to be contributed.

Our April General Membership Meeting was a great success. We presented the two stipends to geology students attending CSUB. Conner and Hector each gave great presentations on their summer field camp plans and their career goals. Each were given rock hammers that they can utilize in the field camp adventures. Additionally, there is good indication that they would return to give a presentation on their summer field camp adventures. Dr. Rathburn and David did an excellent job selecting the deserving students.

The California Federation of Mineralogical Societies (CFMS) Business Meeting and Annual Rock Show was held in Lancaster on May 8th and May 9th. Bernie attended as our Federation Director and brought back some useful information on what is going on at the state level. Special thanks to Anita, Michael, and Jack for working at the CFMS Welcome booth. The Club is in good standing with the CFMS. Of greatest concern, is the proposed restrictions in the Mojave Nationals Trail. We are definitely going to have to voice our concerns and track our field trip locations, so we hopefully continue to collect at some of our favorite locations out at Lavic. If you are interested in helping out, please email me.

The June Auction is right around the corner. We would like the event to be a great success, so if you have any items that you want to donate to the Club that would be greatly appreciated. We will talk in more detail at the upcoming General Membership Meeting. Hope you all can attend.

Once again, if you haven't had a chance, please look over the KCMS Website. Thanks --- James



Upcoming General Membership Meeting

➤ **Thursday, May 19th - East Bakersfield Veterans Hall at 7:00 PM**

**GENERAL
MEETING**



Next KCMS Rock and Lapidary Workshop

➤ **Saturday, May 28th**

Steve and Connie's House @ 9:00 A.M.



Next Field Trip

June 8th through June 10th

San Simeon

Overnight Camping Trip and Beach Collecting

Meet at 8:00 AM at Harbor Freight on June 8th



Celebration of Life

Maria Alicia Louise Johnson (AJ)



March 19, 2022, was a day of tears, love, pain, and laughter in remembrance of AJ. We knew her as a beloved member of both the Kern Mineral Society and the San Joaquin Valley Lapidary Society. She was being honored by members of the community of Taft, the Taft Correctional Institution, Aera Energy, and any other place that her life touched the people that had the privilege to know her. Her four children also gave touching stories of the impact she had on them growing up.

She was life itself. Any occasion that AJ was part of was a very special occasion, just because she was there.

She will be remembered as an exceptional loving, giving, positive, hardworking, hard playing person by her family, co-workers, teammates, friends, and the community. Rest In Peace AJ, your indomitable spirit lives on.



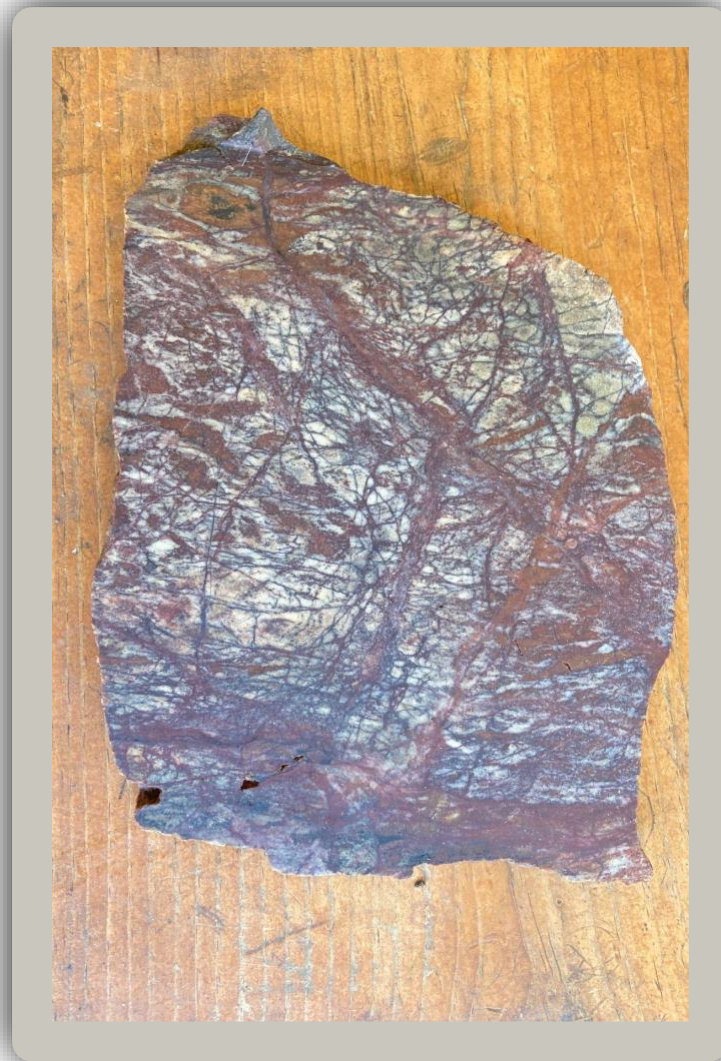
Write up and pictures submitted by Donna Rodriguez.

The Road Trip through the Mojave Desert

The *Lavic Road Trip* was an all-around success. It was a coordinated trip with the KCMS and SJVLS rock and mineral clubs. The brave and adventurous members that went were Anita, Arthur, Bernie, James, Lynette, Michael, and Reko. The weather was spectacular. We visited several locations with a variety of rock types. Camping out under billions of stars in the observable universe on what seemed similar to the surface of Mars. We enjoyed campfire and conversation by night and sunburns and socializing by day. A good time was had by all, and we collected plenty of rocks to bring home.

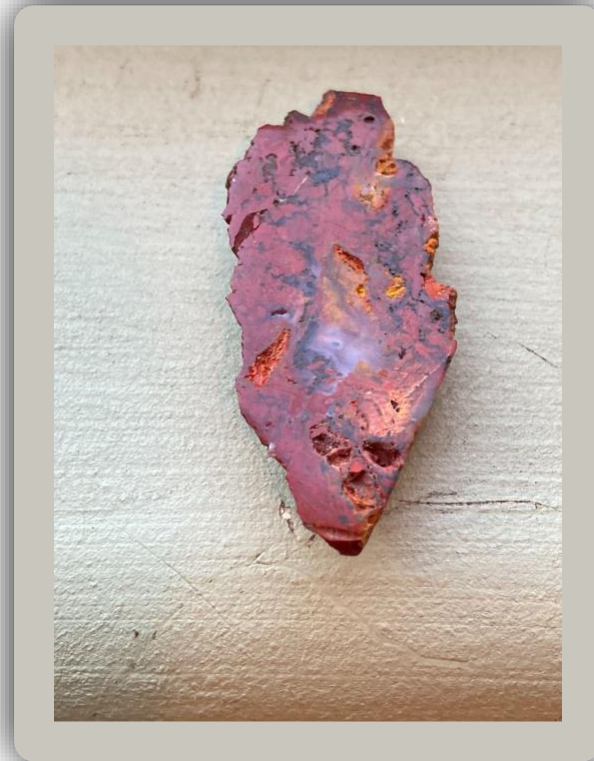
Day 1 North of Barstow

The first stop of the trip was to collect some spider-web jasper, normally found only in Utah. The collection area was on a hillside between two washes. We climbed up and down on the hillside and there were small samples of the jasper flooding the landscape. They seemed to be coming from a seam in the hillside. About the time we were getting ready to leave, Michael was exploring around the other side of the hill and found a place that you could collect on the side of the hill without any digging. An ambitious place to go on the next field trip. Over the years it seems to have migrated down the hill side. We did find a few larger pieces suitable for slabbing and gabbing. The coloration seemed to be quite varied, from white and greenish coloration with black, purple, and white veins.



The second stop contained some lovely red rock called dragon blood jasper and a wonderful spot to take in the scenery.

A small hill with a large outcropping provided a nice place to sit and relax. The sides were covered with samples a couple inches across that would easily make lovely cabochons and any size sphere you would want to make. Blood red was the most prominent color with veins of green and yellow. The best part is you could get out of your vehicle and start collecting without much strenuous hiking.



We had planned on camping at the thulite location east of Ludlow, but the wind was blowing too hard, so we went to Plan B. The camping location was quite interesting because we camped out at the Pisgah Crater. The Cinder cone itself gave us a great view of the surrounding landscape. We set up camp and everyone helped with getting our dinner ready. Once the sun went down you could scan the horizon and not see a single artificial light. The night sky was full of stars, more than you could count in one's lifetime. It was a great learning experience when James and Lynette were locating stars we had not even heard of. After roasting marshmallows and making smores around the campfire and telling some frightening ghost stories and jokes, it was time to rest up for the next big day. Reko really scared us with stories about chupacabras, alien abductions, and gone missing rockhounds. It was difficult to sleep without reliving these stories, but the morning scenery (following page) made it worth it.



Day 2

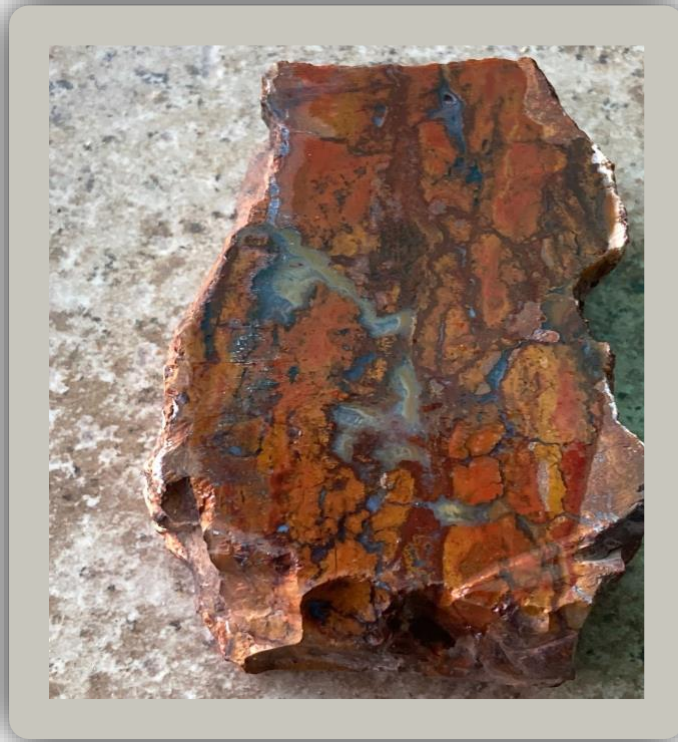
Lavic Siding to Thulite

The Sun started to come up about 5:45 am and Lynette was already halfway up the Pisgah Crater taking pictures of the beautiful sunrise. It was so peaceful and quiet. We had a hearty breakfast of scrambled eggs, ham, bacon, juice, and fruit to keep us going for the busy day ahead. After breakfast, we hiked out to look at the lava tubes. Lava flows east from the cinder cone for several miles. Followed by some wandering around the lava beds looking for lava tubes and studying the strange terrain. It was very much like something you might expect to see as footage sent from the Mars Rover. Climbing up and over the lava flows was strenuous but well worth the effort.

The lava tubes had acted like underground rivers moving lava downhill away from the crater. It seemed most had caved in or collapsed but some were still intact. The size of the tubes was incredible, some big enough for a truck. We then packed up camp as we planned on staying the second night at the thulite collection site.



Our first rock stop on Day 2 was north of Ludlow called Lavic Siding. This area contained red and green jasper with hematite bands running through most of the rocks. Occasionally you could find blue chalcedony stringers in the jasper. Lots of the jasper exhibited lines of coloration and was quite beautiful. This is a great place to gather all the rocks you want to tumble as they are mostly the perfect size to tumble and come out with a beautiful polish. Again, you can get out of your vehicle and start collecting.



We tried to get to what Bernie calls the ketchup, relish, and mustard jasper because of the unique hamburger and hotdog condiments coloration bands. Pulling a loaded trailer through sand was not the smartest idea, even with four-wheel drive. We hit some soft sand and almost got stuck. We were finally able to back up enough to get turned around and get back to a better road.

We then went to look for thulite. You can find float or dig in seams, on either side of the hill with some variation of colors and find all the thulite you can collect. The plateau where we found this would have been our tentative second camping spot but the wind was a bit unpredictable and so we looked around until we had our fill and headed back to camp at the Pisgah Crater once again due to the blowing winds at the plateau.



Everyone pitched in again to prep and cook dinner, and certainly got our fill of good food! Before the sun set, we were able to get a few group photos, which turned out great. Once again, the sky was full of bright stars, and we saw a shooting star or two.

Day 3

Route 66 Dreaming

We woke up early to make breakfast and pack up camp. The rockhounding for our final day would take us to the land off Route 66 by the railroad tracks. We looked for jasper in two separate locations, and although they were the same “type” of rock, the colorations and patterns were a bit varied. At the second location, we got a group photo in front of a government sign posted around the outside perimeter of a testing field. It said, “No Trespassing”, so we collected material on the open side for about an hour, rounded everyone up for our group photo and got on the road. We decide that we would have a celebration lunch at a local owned restaurant. We all had a great meal and headed home for Bakersfield.

Once we got there it took about an hour to find everyone’s rocks, food, and camping gear.

Thank you everyone that went on this great adventure. Thank you for bringing everything we needed for our meals, helping cooking, cleaning up and helping each other setting up tents.

Story contributed by Anita Anderson and Bernie Bentsen. Many of the excellent photos were taking by Lynette.





Grand Opening of KCMS Rock and Lapidary Shop on Saturday, April 30th at the Fleishauer's House

Excellent pictures taken by KCMS Club Photographer Lynette S.



Steve Fleishauer doing the honors by cutting the ribbon to certify the opening of the KCMS Rock and Lapidary Shop. The dedication speech given by James as the workshop got off to a well-attended audience. Special thanks to the donations to the Rock and Lapidary Shop by Steve Collett and SB. Note the breakfast table on following page where important scheduling decisions were made.



The Grand Opening was attended by a great number of members of the KCMS. Steve and Connie were kind enough to host the event. Hope you all will attend the next workshop on Saturday, May 28th at 9:00 AM. The location again will be the Fleishauers. Following page has Anita, Jack, and Michael creating some lapidary masterpieces.



Geology Students Awarded the Field Camp Stipends for 2022



The two students recognized by the KCMS included Conner Lesh and Hector Zavala. They both gave great presentations.

Buena Vista Museum

1801 Chester Ave in Downtown Bakersfield

Events Calendar



Thu, May 19th
Online Virtual Event

Meet the Expert, Biology Dr. Lucas Hall

Urban Carnivores in California's Central Valley Dr. Lucas Hall is a conservation biologist at CSUB. Using data gathered from remote cameras, Dr. Hall will present information about "urban carnivores" such as the kit fox that coexist with us here in the central valley.

[Time & Location](#)

[May 19th, 5:30 PM – 6:30 PM PDT](#)

[Online Virtual Event](#)

[About the Event](#)

Dr. Lucas Hall is a conservation biologist at CSUB. Dr Hall will present information about "urban carnivores" such as the kit fox that coexist with us here in the central valley. Using data gathered from remote cameras, Dr Hall will inform us about what challenges these animals face and how they interact and compete with other animals in our urban environment.

Dr. Hall has had a fascination with critters his whole life and loves to continue learning and talking about them. Most of his graduate and current research has focused on conservation issues related to the kit fox, but he has also worked with other species such as feral horses, deer, pronghorn, carnivores, bats, birds, and reptiles.





UPCOMING ROCK, MINERAL, AND GEM SHOWS



UPCOMING ROCK AND MINERAL SHOWS –SUMMER 2022

June 11-12, 2022 – Escondido, CA

Palomar Gem and Mineral Club

Palomar Gem and Mineral Show

California Center for the Arts, 340 N. Escondido, Escondido 92025

Hours: Saturday 10 AM – 5 PM, Sunday 10 AM – 4 PM

Faceted gems, Slabs, Cabochons, Unique custom jewelry, Rare and common minerals, Fossils, Rough, Beads, Crystals, exhibits, Demonstrations, prizes.

Contact: (425) 281-6218, tonifloyd41615@gmail.com

Website: <http://palomargem.org>

June 11, 2022 - Torrance, CA

South Bay Lapidary & Mineral Society

Natures Treasures – Slabs, rough rocks and polished stones for sale. Children's activities and silent auction.

Ken Miller Recreation Center, 3341 Torrance Blvd., Torrance, CA 90503

Contact: southbaylms@gmail.com

Website: <https://southbaylapidaryandmineralsociety.com/>



July 16-17, 2022 – Culver City, CA

Culver City Gem & Mineral Society

Fiesta of Gems

Veterans Memorial Auditorium, 4117 Overland Ave., Culver City, 90230

Hours: Saturday 10 AM – 6 PM, Sunday 10 AM – 5 PM

36 vendors plus exhibits, demos, workshops and games. Fun for the whole family – Free admission and free parking.

Contact: BradSmithJewelry@gmail.com

Website: <http://CulverCityRocks.org/fiesta.htm>

KCMS CLASSIFIEDS

KCMS is proud to announce the addition of a Classified Ads Section to the Pseudomorph Newsletter!!

Calling on all members who have any items that they want to sell or those looking to buy.

**Rocks, Minerals, Rock Saws, but that's not all!!
We will also accept Lawn Equipment,
Electronics, Homemade Crafts, etc.**

The Pseudomorph Classifieds will not be limited to only rock & mineral related items, but to any items members are looking to sale.

When making a classified ad for the newsletter be sure to include:

- Description of Item
- Asking Price
- Contact Information
- Picture(s)

Pictures are not necessary but will be added if provided. Please send photographs in JPEG (.jpg) format if possible.

Classified Ads for the Pseudomorph are due to the editor no later than the first Thursday of each month, via Email or by U.S. Mail.

James May, Editor
Email geojim9@hotmail.com

If you have any ads you want added to the next Pseudomorph, please email me the details and I will post.

Don't Forget the BREAKFAST CLUB

The first Wednesday of each month, year-round, KCMS Members and occasional guests meet at 8:30 AM at Lorene's Coffee shop at 23rd and Eye streets in downtown Bakersfield. Everybody is welcome to attend!
-- Dalia Hernandez





KCMS Monthly Meeting

Please join the KCMS at 7:00 p.m. on Thursday, May 19th at the East Bakersfield Veterans Hall located at 2101 Ridge Road in Northeast Bakersfield. We hope you can attend, and visitors are always welcome.



Kern County Mineral Society

is a Charter Member of the California Federation of Mineralogical Societies

and is affiliated with the American Federation of Mineralogical Societies



The Kern County Mineral Society, Inc. was organized in 1935 to promote the study of mineralogy and allied earth sciences, to collect and study minerals and rocks, to study and practice the techniques of jewelry making, to promote good fellowship and good citizenship and to promote education in the earth sciences. Membership dues are; \$20 for singles, \$25 for couples.

KCMS WEBSITE: <http://www.kerncountymineralsociety.org/>

Pseudomorph Subscriptions

The Pseudomorph is published 10 times a year (September through June) by Kern County Mineral Society, P.O. Box 12305, Bakersfield, CA, 93389-2305. Subscription included with Membership. Non-members \$5.50 per year, Jan. thru Dec., not prorated.

KCMS will email a free .pdf subscription to any high school, college, or university student who wishes to receive it. Just email a request to geojim9@hotmail.com

Articles for *The Pseudomorph* are due to the Editor no later than the first Thursday of each month, via Email, via Facebook, or by US Mail. Please send photographs in JPEG (.jpg) format if possible, and text as Notepad, Word, or other simple text for me to paste and edit.

James May, Editor
Email geojim9@hotmail.com

Facebook: Kern County Mineral Society

Articles in this publication may be reprinted if attribution is given to the author and to *The Pseudomorph, Monthly Newsletter of the Kern County Mineral Society.*



KCMS Officers 2022

President
James May
geojim9@hotmail.com

Vice President
Connie Fleishauer

Secretary
Anita Anderson

Treasurer
Dennis Huggins

Board Members 2021

Pseudomorph Editor
James May
geojim9@hotmail.com

Curator
Steve Fleishauer

Federation Director
Bernie Bentsen

Sergeant at Arms
Dennis Huggins

Field Scout
Bernie Bentsen

Committee Chairs 2022

Kitchen
Sue Kimbriel

Scholarship
David Schaad

Door Hostess
Kay Hevle

Facebook Editor
Anita Anderson



FUN, GAMES, & FIELD EXCURSIONS



GUESS THIS MONTH'S MYSTERY CABACHON



Here is this month's mystery slab. Please submit your answer to geojim9@hotmail.com. Each month's winner will be placed in a drawing at the end of the year for a special prize. Last month's winner was Connie Fleishauer who correctly identified the slab as Roxbury Puddingstone. Nice research Connie.





Kern County Mineral Society Membership Application

Applicant Information

Full Name: _____ Date: _____

Last **First** **M.I.**

Address: _____

Street Address **Apartment/Unit #**

City **State** **ZIP Code**

Phone: _____ Email : _____

Birthday (Month/Day): _____ Occupation: _____

How did you hear about the Kern County Mineral Society? _____

What skills do you have that may benefit the Club? _____

Interests

What are some activities you would like to pursue in the Kern County Mineral Society?

Field Trips: Camping: Community Outreach:

Lapidary: Presentations: Collecting Rocks/Minerals:

Jewelry Making: Rock/Mineral Sales: Social:

Membership Dues and Signature

The Kern County Mineral Society was organized in 1935 to promote the study of mineralogy and allied Earth sciences. We are a social club, interested in collecting rocks and minerals, learning lapidary techniques, sharing our experiences with each other and with our community, and promoting rockhounding and jewelry making hobbies throughout our community.

Dues Paid: \$20 for Individual \$25 for Couple Partial (after Oct 1st)

Signature: _____ Date: _____